



18 LHK0191  
EN50291-1:2018  
EN14604:2005+AC:2008

# FireAngel

## SCB10 COMBINATION SMOKE AND CARBON MONOXIDE ALARM USER MANUAL

This optical smoke alarm is suitable for detecting slow smouldering fires. Like other smoke alarm devices, it can be subject to nuisance alarms from steam and should not be placed near bathrooms. For the earliest warning, we recommend this combination smoke and CO alarm is fitted in all rooms where the temperature is between 0°C (32°F) and 40°C (104°F). Prolonged exposure to temperatures outside those stated above will reduce product life.

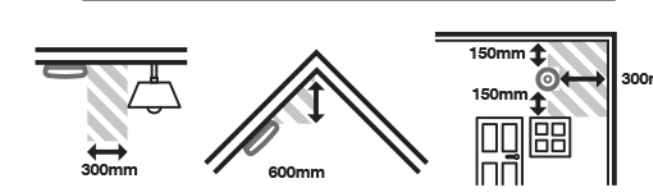
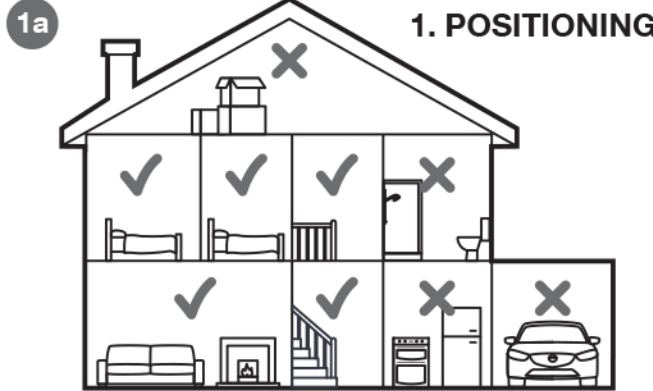
Check with local building and fire regulations for your property, to ensure compliance. This alarm must be installed by a competent person, able to install according to the instructions. This combination smoke and CO alarm is not intended for any non-residential, commercial or industrial application.

WARNING: Experience has shown that children may not be woken by fire alarm tones. It is important that children are never left alone in a house. Families should have a fire escape plan that is rehearsed, so that everyone knows how to escape when fire occurs. The immediate priority when fire occurs is to ensure that any sleeping children are woken from sleep and are immediately taken to a place of safety outside the property, along with all other occupants. The fire and rescue service should always be called without delay, no matter how small the fire.

CE 19  
0906-CPR-00690  
EN 14604:2005 + AC:2008  
Smoke alarm device  
DOP: FSTDOP19006

UK CA 21  
0359  
EN 14604:2005 + AC:2008  
Smoke alarm device  
DOP: FSTDOP19006

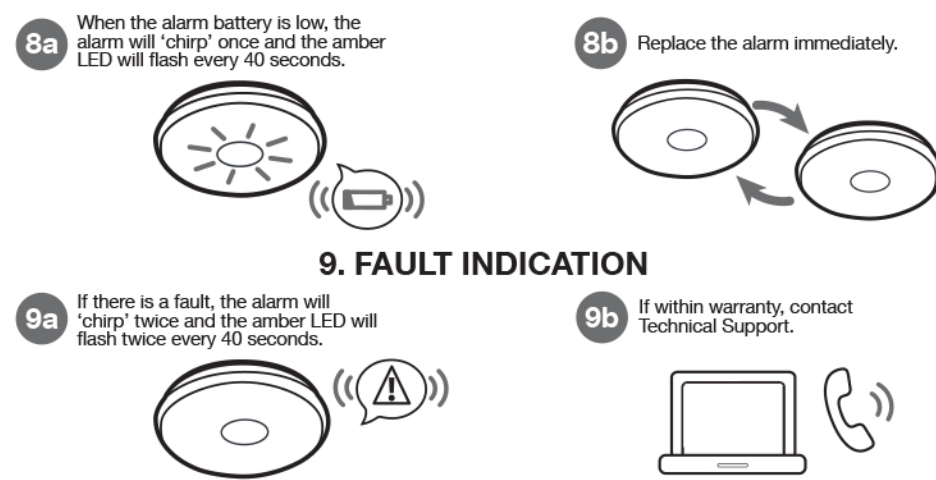
**Technical Support**  
Online: [www.fireangeltech.com/support](http://www.fireangeltech.com/support)  
E-mail: [technicalsupport@fireangeltech.com](mailto:technicalsupport@fireangeltech.com) Phone: 0330 094 5830  
Fire & Rescue Customers: 0800 141 2561  
© FireAngel Safety Technology Limited  
Vanguard Centre, Coventry CV4 7EZ, UK  
[www.fireangeltech.com](http://www.fireangeltech.com)  
Note: This user manual is also available in large text and other formats. Email: [technicalsupport@fireangeltech.com](mailto:technicalsupport@fireangeltech.com) or call 0330 094 5830 for further information.



Your combination smoke and CO alarm is suitable for the landing, hallway, bedroom, living room and dining room. Aim to install the alarm in a bedroom or hallway located close to the sleeping area. If more than one sleeping area exists, locate additional alarms in each sleeping area. If the alarm is located in the same room as a fuel-burning appliance, it should ideally be located 3m from the potential CO source. Common sources of CO include: oil and gas boilers, portable generators, oil or solid fuel cookers, gas or paraffin heaters, barbecues, clogged chimneys, wood or gas fireplaces, any gas or fossil fuel-burning appliance.

The alarm should be sited at least 300mm from light fittings and walls. Ideally as central as possible in the room. It should be positioned at no more than 600mm vertically below the highest point in the room. If positioning your smoke alarm on the wall, the top of the alarm must be between 150mm and 300mm below the ceiling, and at least 300mm from a neighbouring wall.

### 8. LOW BATTERY WARNING



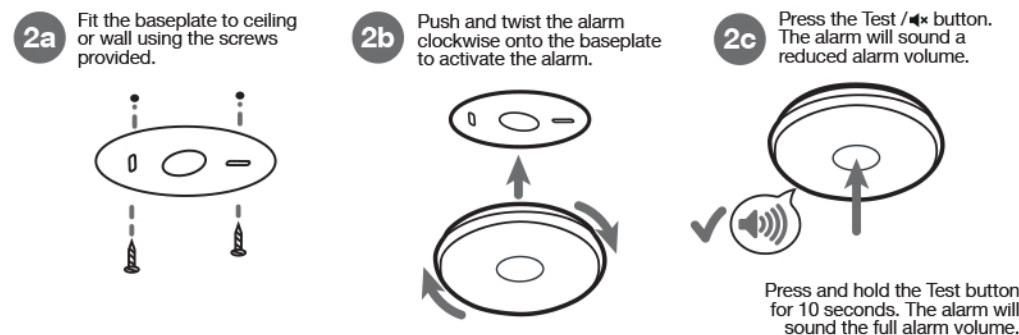
THE COMBINED SMOKE AND CO ALARM MUST BE REPLACED IMMEDIATELY IF THERE IS A FAULT. IF THE ALARM HAS A FAULT IT CANNOT DETECT A FIRE OR CO LEAK.

### TROUBLESHOOTING/TECHNICAL SUPPORT

<b>If your alarm device does not sound during testing:</b>	<ul style="list-style-type: none"> <li>Check that your alarm is activated (see Figure 2b).</li> <li>If testing after first activating, allow 40 seconds for the alarm to settle.</li> <li>Press and hold the centre of the Test /▲ button firmly.</li> <li>If the alarm has been silenced and is in low sensitivity mode it may not test. Wait 15 minutes then try again.</li> </ul>
<b>If your alarm device continues to sound a known false alarm:</b>	<ul style="list-style-type: none"> <li>Check the location of your alarm device.</li> <li>Clean the alarm device.</li> </ul>
<b>If your alarm device 'chirps' intermittently:</b>	<ul style="list-style-type: none"> <li>Check the location of your alarm device.</li> <li>Check that your alarm device is definitely the source of the chirping; make sure the noise isn't coming from another alarm.</li> </ul>

### 2. INSTALLATION

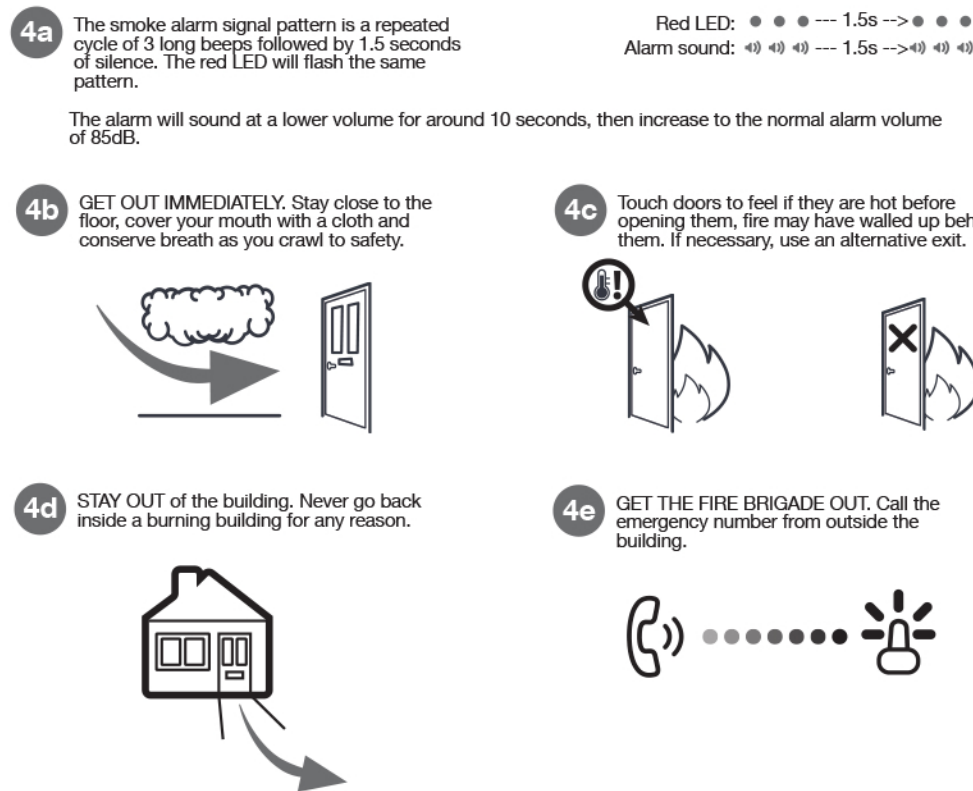
**WARNING! To prevent injury, this device must be securely attached to the ceiling/wall in accordance with the installation instructions**



**THE ALARM MUST BE INSTALLED ON THE BASEPLATE TO ACTIVATE THE ALARM.** After activation, three color LEDs (green/amber/red) will light up briefly and the device will beep. The green LED will then flash constantly for 40 seconds. Following this, the green LED on the front of the alarm should flash once every 40 seconds (approx.) to show that it is active. The alarm test sound pattern will be: 3 long beeps followed by a 1.5 second pause, then 4 short beeps followed by a 5 second pause. This cycle will repeat for the duration of the test. The red LED will flash the same pattern. This CO alarm should not be seen as a substitute for the proper installation, use & maintenance of fuel-burning appliances (including appropriate ventilation & exhaust systems), nor the sweeping of chimneys.

### 4. SMOKE ALARM AWARENESS

**NEVER IGNORE ANY ALARM. IF THERE IS ANY QUESTION AS TO THE CAUSE OF THE ALARM, ALWAYS ASSUME THAT IT IS AN ACTUAL FIRE. The smoke alarm takes precedence if both smoke and carbon monoxide are present.**

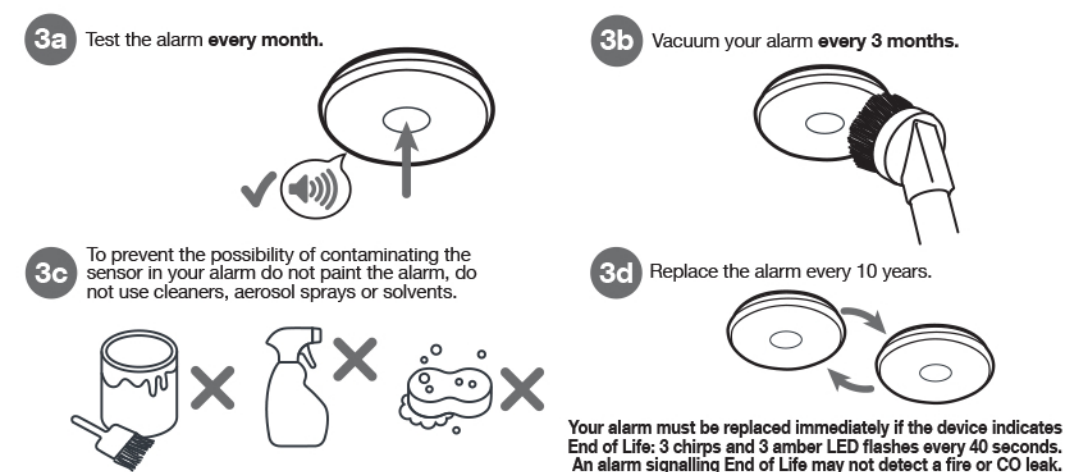


When fire strikes, a prepared and practised escape plan could prove vital. Consider and discuss the following hints:

- Ensure everyone is familiarised with the alarm signal.
- Keep all windows and doors closed except for escape purposes.
- Plan a set meeting place for after an escape.
- Prepare and practice an escape plan before a fire starts.
- Draw a floor plan. Have fire drills often. Practice your escape.

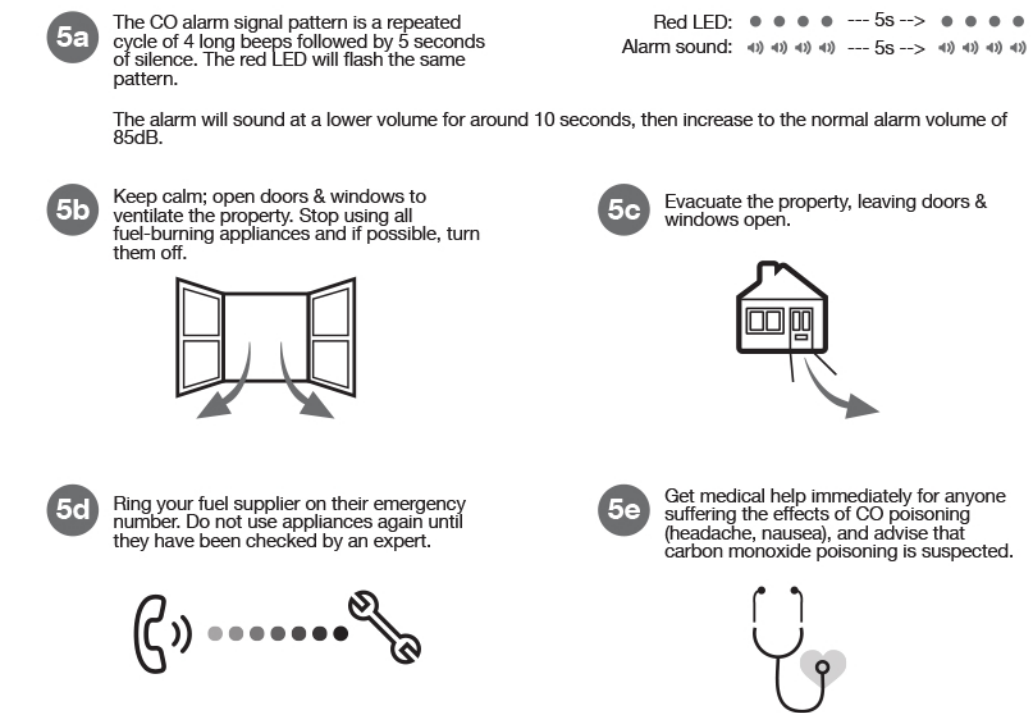
### 3. MAINTENANCE

**Do not use any other test method except the process described in this manual. Do not tamper with the alarm, for risk of electric shock or malfunction.**



### 5. CO ALARM AWARENESS

**A loud alarm is a warning that potentially lethal levels of carbon monoxide are present. NEVER IGNORE THIS ALARM, FURTHER EXPOSURE CAN BE FATAL. Immediately check residents for symptoms of CO poisoning. Contact the proper authorities to resolve all CO problems.**



**DEPENDING ON THE LEVEL OF CO DETECTED, IT CAN TAKE UP TO 10 MINUTES TO CLEAR THE SENSOR AND THE ALARM TO STOP. DO NOT RE-ENTER THE PROPERTY UNTIL THE ALARM HAS STOPPED.**

The following symptoms may be related to CO poisoning which all household members should be aware of:

- Mild Exposure: Slight headache, vomiting, fatigue (often described as 'flu-like' symptoms).
- Medium Exposure: Severe throbbing headache, drowsiness, confusion, fast heart rate.
- Extreme Exposure: Unconsciousness, convulsions, cardiorespiratory failure, death.

Your CO alarm monitors levels of CO as parts per million (ppm) in the air surrounding the detector.

- 35ppm The maximum allowable concentration for continuous exposure for healthy adults in any 8 hour period (as recommended by the Occupational Safety & Health Administration).
- 200ppm Slight headache, fatigue, dizziness, nausea after 2 - 3 hours.
- 400ppm Frontal headaches within 1 - 2 hours, life threatening after 3 hours.
- 800ppm Dizziness, nausea & convulsions within 45 minutes. Unconsciousness within 2 hours. Death within 2 - 3 hours.

This apparatus is designed to protect individuals from the acute effects of carbon monoxide exposure. It may not, however, prevent the chronic effects of carbon monoxide exposure and will not fully safeguard individuals at special risk (age, pregnancy) or with specific medical conditions. If in doubt, consult your doctor.

### TECHNICAL SPECIFICATION

Model: SCB10  
Product standards: EN 14604:2005+AC:2008 & EN 50291-1:2018  
Type of apparatus: Type B  
Power Supply: 3V DC (EVE CR17450L) (non-replaceable, sealed-in battery) (up to 10 years life time)  
Sensor of Smoke: Optical  
Smoke alarm silence: 10 minutes  
Sensor of CO: Electrochemical  
CO alarm sensitivity Setting: Certified to EN50291-1:2018  
30PPM Without alarm before 120 minutes  
50PPM Between 60 to 90 minutes  
100PPM Between 10 to 40 minutes  
300PPM Less than 3 minutes

Standby Current: <20µA (average)  
Alarm Current: <20mA (average)  
Operation Ambient Condition: 0-+40°C, 30-93%RH non-condensing  
Storage/Transport Ambient Condition: -20-+50°C, 10-95% RH non-condensing  
Alarm sound : ≥85dB at 3m @3.0 ± 0.5 kHz  
Low Battery warning silence: 9 hours  
Installation Location: Ceiling and wall  
Detection range: Max. 40 m<sup>2</sup> within a room.  
Size: Ø 134\*40mm  
Weight: 200g (net)

This combination smoke and CO alarm is designed to protect from the danger of fire. It is also designed to detect carbon monoxide gas from any source of combustion. (It is not designed to detect any other gas.)

The SCB10 combination Smoke/Carbon Monoxide Alarm has two separate alarms. The CO Alarm is not designed to detect fire or any other gas. It will only indicate the presence of carbon monoxide gas at the sensor. Carbon monoxide gas may be present in other areas. The Smoke Alarm will only indicate the presence of smoke that reaches the sensor. The Smoke Alarm is not designed to sense gas, heat or flames.

### WARRANTY AND DISPOSAL

FireAngel Safety Technology Limited warrants to the original purchaser that its enclosed smoke alarm device be free from defects in materials and workmanship under normal residential use and service for a period of 3 (three) years from the date of purchase. Provided product is sent back to FireAngel Safety Technology with proof and date of purchase. FireAngel Safety Technology Limited hereby warrants that during the 3 (three) year period commencing from the date of purchase FireAngel Safety Technology Limited, at its discretion, agrees to replace the unit free of charge. The warranty on any replacement SCB10 alarm, will last for the remainder of the period of the original warranty in respect of the alarm originally purchased - that is from the date of original purchase and not from the date of receipt of the replacement product. FireAngel Safety Technology Limited reserves the right to offer an alternative product similar to that being replaced if the original model is no longer available or in stock. This warranty applies to the original retail purchaser from the date of original retail purchase and is not transferable. Proof of purchase is required.

This warranty does not cover damage resulting from accident, misuse, disassembly, abuse or lack of reasonable care of the product, or applicators not in accordance with the user manual. It does not cover events and conditions outside of FireAngel Safety Technology Limited's control, such as Acts of God (fire, severe weather etc.). It does not apply to retail stores, service centres or any distributors or agents. FireAngel Safety Technology Limited will not recognise any changes to this warranty by third parties.

FireAngel Safety Technology Limited shall not be liable for any incidental or consequential damages caused by the breach of any expressed or implied warranty. Except to the extent prohibited by applicable law, any implied warranty of merchantability or fitness for a particular purpose is limited in duration for 3 (three) years.

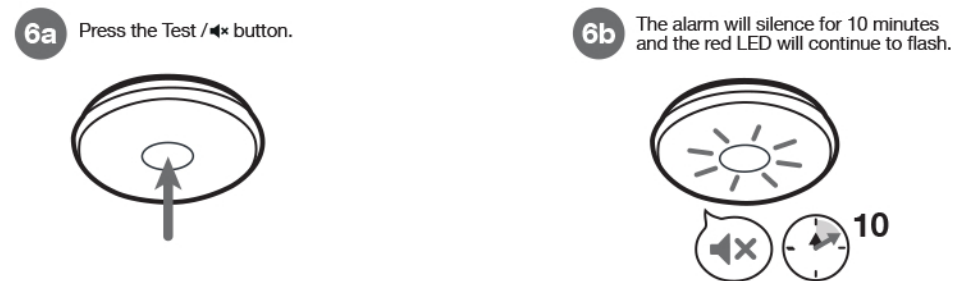
This warranty does not affect your statutory rights. Except for death or personal injury, FireAngel Safety Technology Limited shall not be liable for any loss of use, damage, cost or expense relating to this product or for any indirect, or consequential loss, damages or costs incurred by you or any other user of this product.

Waste electrical products and batteries should not be disposed of with your other household waste. The alarm and its batteries is ideally suited for disposal within the waste electronic and electrical equipment (WEEE) recycling scheme. Please recycle where facilities exist. Check with your local authority, retailer or contact our Technical Support team for recycling/disposal advice as regional variations apply.

To deactivate the alarm, use a screwdriver to remove the plastic pin from under the label on the back of the alarm. Insert the pin into the deactivation hole. Once the alarm has been deactivated, the battery will be depleted and the alarm will stop emitting the low power warning chirp. The unit is now ready for disposal. Deactivation is permanent, once the alarm has been deactivated, it will no longer function. Do not attempt to open. Do not burn.

### 6. SILENCE FEATURE - SMOKE ALARM ONLY

**In a known false alarm, the alarm can be silenced temporarily.**

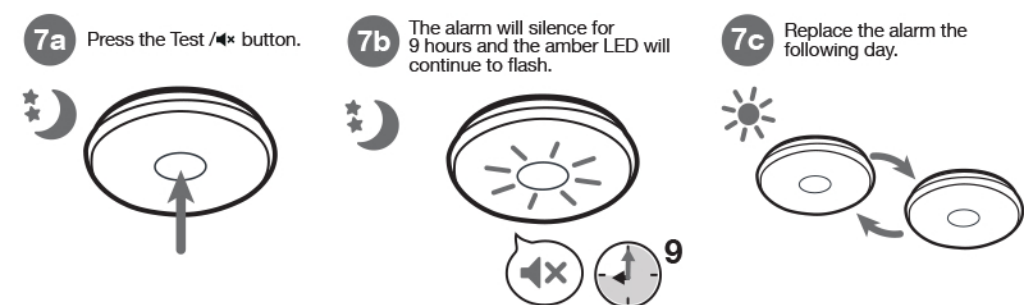


Combination smoke and CO alarms can react to cooking fumes or other non emergency situations. Your alarm features Silence technology. In the event of a known false alarm you can temporarily silence it by pressing the Test /▲ button. Your alarm will automatically return to full sensitivity after 10 minutes.

**NEVER IGNORE ANY ALARM.** If an alarm is sounding, it is warning you of a potentially hazardous situation. Do not ignore it. Ignoring the alarm may result in injury or death. If your alarm sounds and you are not absolutely certain of the source, get everyone out of the house immediately.

### 7. SLEEP EASY™ FEATURE

**If a low battery 'chirp' occurs at night, the alarm can be silenced so it does not keep you from sleeping.**



Your alarm will still detect smoke and CO during the Sleep Easy mode but you must replace the alarm within 30 days. Replace your smoke alarm device immediately to ensure protection in case of fire. If the alarm is less than 10 years old, contact Technical Support.  
**YOUR ALARM CANNOT BE SILENCED IF THE CHIRP IS INDICATING A FAULT.**